

Works

Tsuyoshi Tanaka

#1 PanoPlaza (2011/8~)

- ❑ Panorama Virtual Tour building online service
- ❑ Running on Windows Azure platform



<http://vimeo.com/27226219>

<http://www.panoplaza.com> (service portal)

<http://cloud.panoplaza.com> (application)

#2 Multiscreen Panorama VR (1) (2014/5)

- ❑ 6 screens syncing by P2P connections
- ❑ Web application



<https://www.youtube.com/watch?v=yWo5dn175Do>

#3 Multiscreen Panorama VR (2) (2013/10)

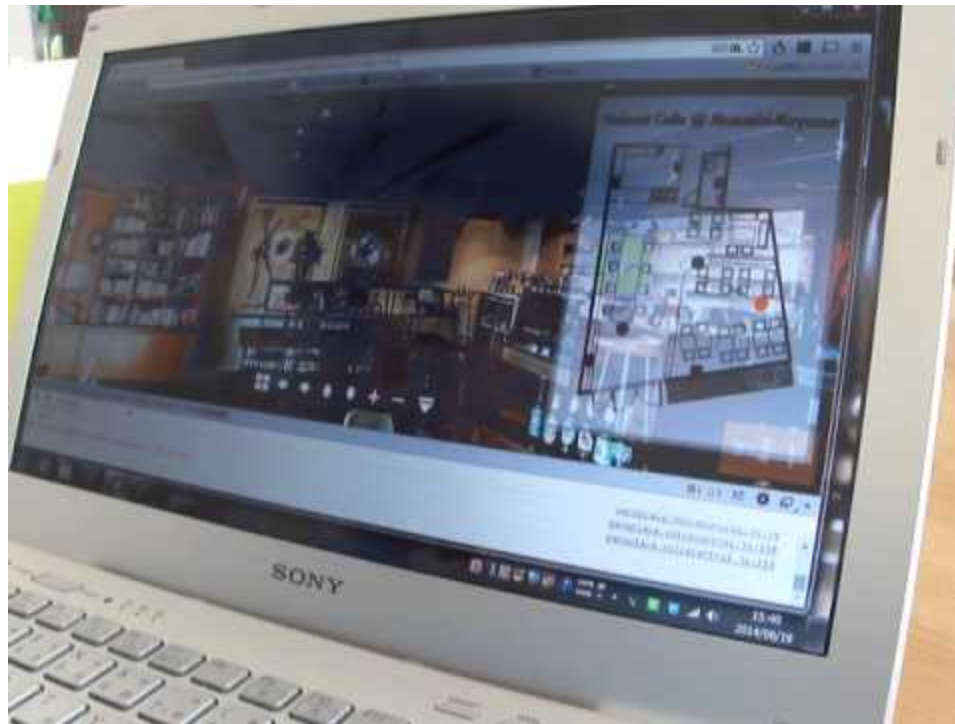
- ❑ 3 tablets syncing by Bluetooth connections
- ❑ Android native application



<https://www.youtube.com/watch?v=4e1v-no2OzQ>

#4 Panorama VR x VoiceControl (2014/6)

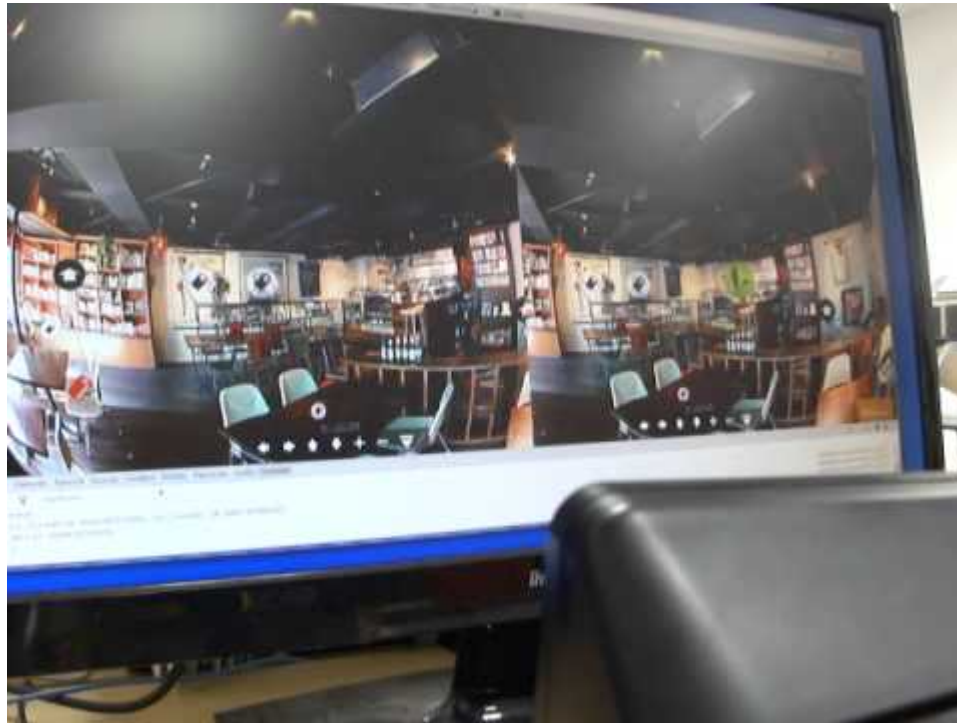
- ❑ PanoramaVR controlled by voice



<https://www.youtube.com/watch?v=itpNOSutf3s>

#5 OculusRift x VoiceControl (2014/7)

- ❑ PanoramaVR controlled by voice



<https://www.youtube.com/watch?v=RpBjqj37i3w>

#6 PanoPlaza x OCR (2014/9)

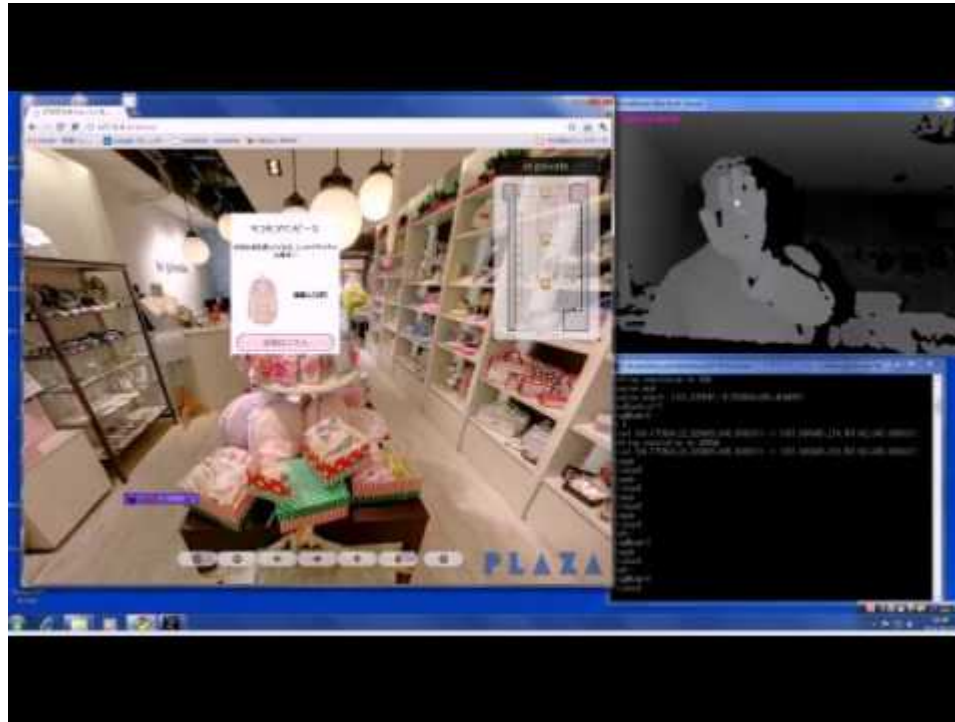
- ❑ Virtual tour search using OCR
- ❑ No text typing is needed



<https://www.youtube.com/watch?v=hJ2N8R-OY-4>

#7 PanoramaVR x Kinect (2012/5)

- ❑ Virtual tour control using Kinect
- ❑ Holding a hand for a moment makes a click



https://www.youtube.com/watch?v=ee_zRwAKw4k

#8 LeapMotion x ObjectVR (2013/10)

- ❑ Pan/Tilt control using LeapMotion
- ❑ Gesture detection



https://www.youtube.com/watch?v=_p4-OEviH8Q

#9 Kinect x AR (2012/6)

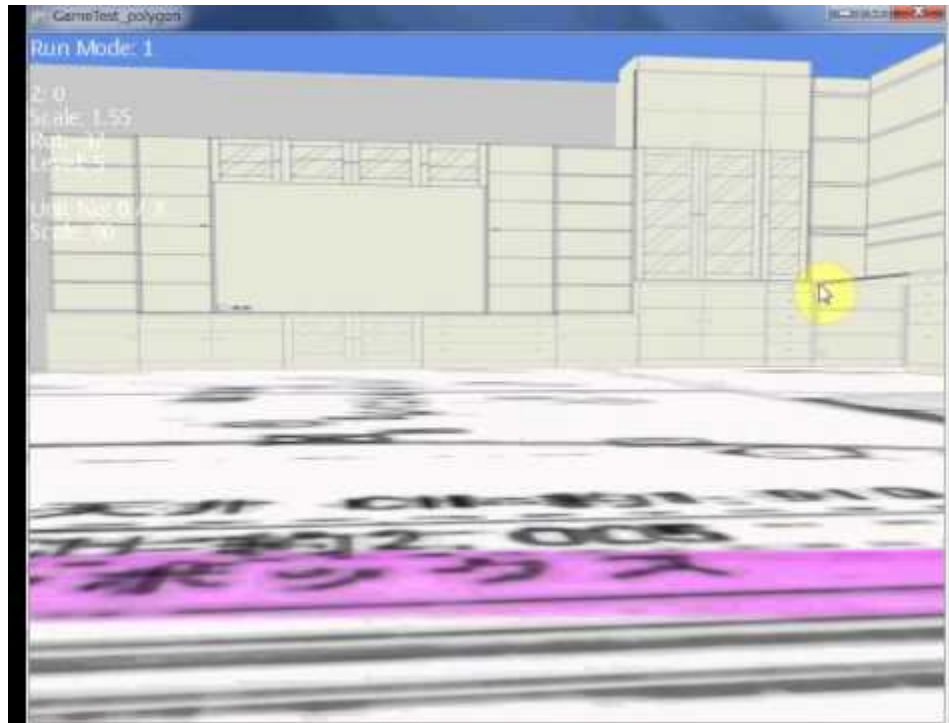
- ❑ Special weapon is activated by specific pose and gesture



<https://www.youtube.com/watch?v=Ix5xCBor-yw>

#10 Furniture layout simulation tool (2011/2)

- ❑ 3D model is generated by reading parts specs (W/H/D) from catalog
- ❑ Microsoft XNA Framework



<https://www.youtube.com/watch?v=G2diNC49Ia8>

#11 Gaze detection device (2006)

- ❑ Real-time gaze recognition
- ❑ IR camera + IR LEDs

